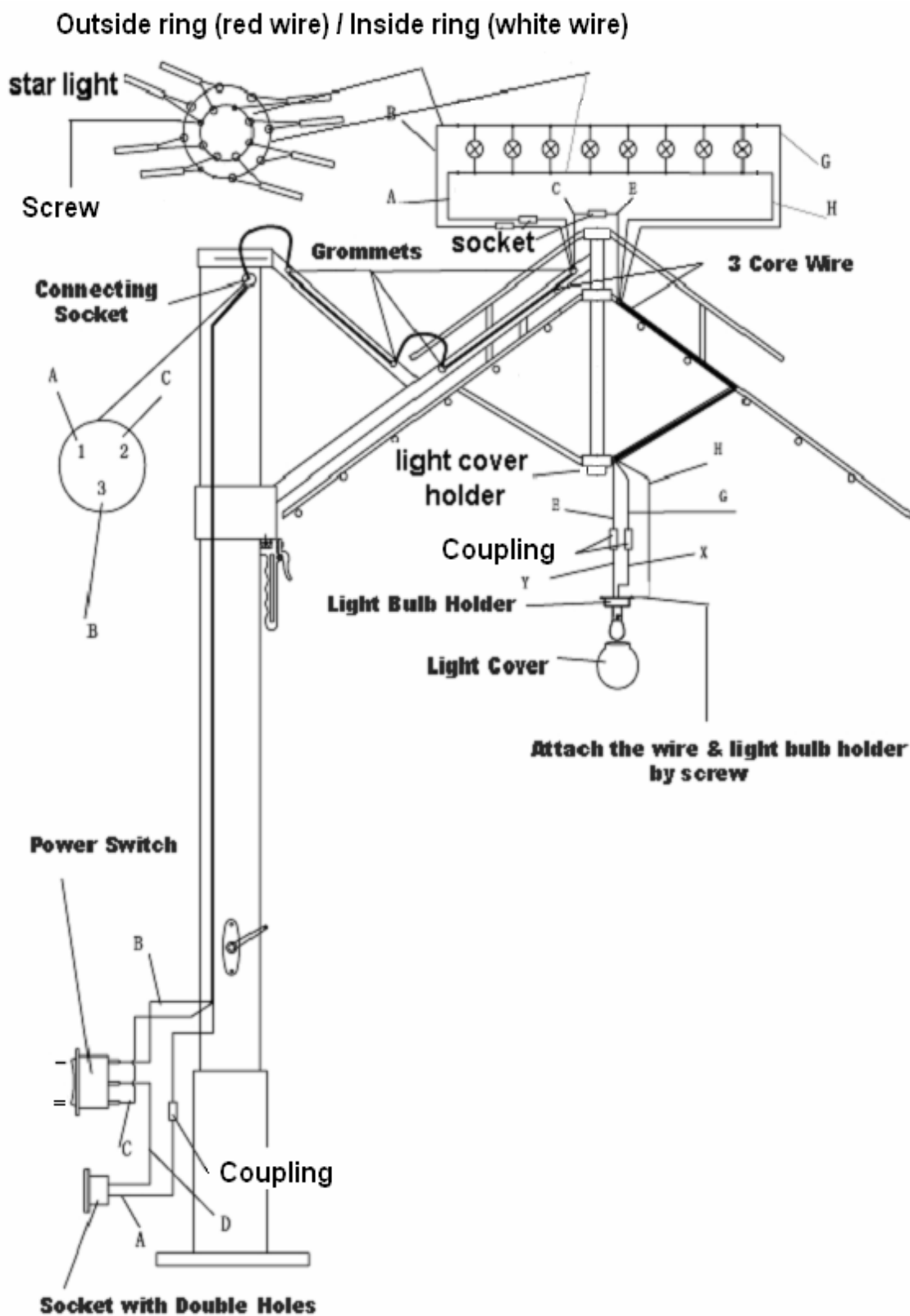


# Diagram of the Electrical Wire Layout of the Portofino Pro



# Instructions on how to check the lighting system of the Portofino Pro

**CAUTION: Always unplug any electrical appliance before attempting any repairs.**

## THE CORRECT OPERATING INSTRUCTIONS:

When the switch is in the “---“ position, the moon light is bright and star lights are off. When the switch is in the “==“ position, the moon light is dim and starlights are bright.

## WIRE LAYOUT

MAIN POST: On the Power Switch, wire B is connected to “---“ terminal and wire C is connected to “==“ terminal. One end of the wire D (hot wire) is connected to the middle terminal on the power switch and the other end of the wire is connected to one terminal on the Power Socket. The wire A (neutral wire) is connected to the 2nd terminal on the Power Socket.

APPLIANCE MANTLE: Wire B is connected to the Inside Ring and wire A is connected to the Outside Ring. Wire H is connected to the Outside Ring and wire G is connected to Inside Ring. Wire C is coupled to wire E.

LIGHT BULB HOLDER: Wire H (ground wire) is connected to the Light Bulb Holder. Wire E is coupled to wire Y at the Light Bulb Holder. The wire G is coupled to wire X at the Light Bulb Holder.

## TROUBLESHOOTING STEPS

Problem #1 – If the switch is in the “==“ position and the star lights are on, but the moon light is off, do the following steps.

1. Check the two wires between the light cover holder and light bulb holder. Make sure wire E and wire Y are connected together at the coupling. Make sure the wires are not loose, broken or cut. Make sure wire G and wire X are connected together at the coupling. Make sure the wires are not loose or broken.

2. Check the weld spot of wire Y and wire X on the light bulb holder. Make sure they are not loose or broken. It may be necessary to replace the light bulb holder.

3. Check to make sure wire C and wire E, outside the appliance mantle, are connected together at the coupling. Make sure the wires are not loose or broken.

4. Make sure wire H is firmly, grounded to the light bulb holder. Make sure the wire is not loose or broken.

**Problem #2** - If the Power Switch is in the “--” position and the Star lights are off, but the moon light is on dim, do the following steps.

1. Check the coupling on wire B, outside the appliance mantle. Make sure the wire is not loose or broken.

2. Check to make sure wire B and wire G, inside the appliance mantle, are firmly connected to the Inside Ring.

3. Check to make sure wire A and wire H are firmly, connected to the Outside Ring in the appliance mantle.

**Problem #3** – If the switch is in the “---“ position and the Moon light and star lights are both off, do the following steps.

1. Check if the transformer is damaged. The input AC power 110V/or 220V, the output DC power 12V. Make sure the wires are not cut or broken.

2. Check the coupling on wire B outside the Appliance Mantle. Make sure wire C and wire E are connected together at the coupling. Check the coupling on wire A, outside the mantle.

3. Check to make sure wires A and B and wires G and H are firmly, connected to the two Rings, inside appliance mantle. Retighten all the screws.

4. Check to make sure wire E and wire Y are firmly, connected together at the coupling. Make sure wire G and wire X wire are firmly, connected together at the coupling. Make sure all the wires are not loose or broken.

5. Check to make sure wire H is firmly, attached to the light bulb holder.

6. Check the two welding points of wires X & Y on the light bulb holder.
7. Check to make sure wires B, C and D are firmly, connected to the Power Switch.
8. Check to make sure wires A and D are firmly, connected to the Power Socket.
9. Check the connecting socket at the top of the Main Post. Make sure the male and female sockets are firmly, connected together. Check the wires on the back of each sockets.
10. If the above steps do not work, there is a possibility that the wires built in the frames are broken.

**Problem #4** – Starlights on the individual ribs are off

1. Check to make sure the two wires of the rib light are firmly attached to the two Rings, inside the mantle. Retighten all the screws.
2. Check to make sure the string light is not broken, if so, replace it.